

SUBARU **B9 TRIBECA**

2006 SPECIFICATIONS



# SUBARU **B9** TRIBECA

## Engine

### Subaru B9 Tribeca

<i>Type</i>	3.0L Dual Overhead Cam (DOHC), 24-valve, horizontally-opposed, high output, 6-cylinder SUBARU BOXER engine with Electronic Throttle Control, Active Valve Control System and Active Valve Lift System
<i>Power</i>	250 hp @ 6,600 rpm
<i>Torque</i>	219 lb-ft @ 4,200 rpm
	<i>Meets Low Emission Vehicle (LEV2) standards</i>

## Transmission and Drivetrain

<i>Automatic Transmission</i>	5-speed electronic direct control SPORTSHIFT™ automatic transmission (5EAT SS) AWD type: Variable Torque Distribution (VTD) with lateral-g and yaw-rate sensor and an electronically controlled locking centre differential
<i>Drivetrain</i>	Subaru symmetrical full-time All-Wheel Drive system Vehicle Dynamics Control system (VDC) and Traction Control System (TCS)

## Chassis

<i>Suspension</i>	4-wheel fully-independent Heavy-duty raised Double wishbone with aluminum upper A-arm (rear)
<i>Brakes</i>	Power-assisted, dual-diagonal system ABS 4-channel/4-sensor/4-wheel Electronic Brake-Force Distribution (EBD) Front: Ventilated discs (312 x 30 mm), dual piston calipers Rear: Solid discs (314 x 18 mm), single piston calipers
<i>Steering</i>	Engine speed sensitive, power-assisted rack and pinion 10.8 m minimum turning circle (curb-to-curb)

- 5 Passenger
- 5 Passenger Limited
- 7 Passenger
- 7 Passenger Limited
- 7 Passenger Limited DVD+NAV

## Safety and Security

• • • • •	Airbags (SRS): Driver and front passenger, dual-stage deployment
• • • • •	Airbags (SRS): Front seat side-impact
• • • • •	Airbags (SRS): Side curtain (first and second row)
• • • • •	Airbags (SRS): Driver's seat position sensor
• • • • •	Airbags (SRS): Passenger occupant detection system with on/off indication
• • • • •	Brake pedal: Collapsible, passive safety type
• • • • •	Child safety: Rear door locking system
• • • • •	Child safety: Rear seat ISO-FIX/LATCH anchor system (second and third row)
• • • • •	Driver's foot rest: Impact absorbing
• • • • •	Head restraints (front): Height adjustable, passive safety type
• • • • •	Head restraints (rear): Height adjustable
• • • • •	Seatbelts (front): 3-point with pretensioners and load limiters (ELR)
• • • • •	Seatbelts (front): Height adjustable shoulder belt anchors
• • • • •	Seatbelts (rear): 3-point, all seating positions (ALR/ELR)
• • • • •	Security: Anti-theft system
• • • • •	Security: Engine immobilizer system
• • • • •	Security: Keyless entry system with panic alarm
◦ ◦ ◦ ◦ ◦	Security: Shock sensor
• • • • •	Steering column: Collapsible
• • • • •	Structure: Advanced ring-shaped reinforcement frame
• • • • •	Structure: Dual, side-impact door beams (front & rear)
• • • • •	Structure: Energy-absorbing crumple zones (front & rear)
• • • • •	Tire Pressure Monitoring System (TPMS)

- 5 Passenger
- 5 Passenger Limited
- 7 Passenger
- 7 Passenger Limited
- 7 Passenger Limited DVD+NAV

## Exterior

• • • • •	Body: Anti-corrosion treatment
• • • • •	Body: Dual-sided galvanized steel
• • • • •	Body: Rocker panel, wheel arch and side quarter protector moldings (black)
◦ ◦ ◦ ◦ ◦	Bumper (rear): Step pad
• • • • •	Door mirrors: Power adjustable, foldable & heated (body colour)
• • • • •	Door mirrors: Integrated LED turn signals
• • • • •	Door sills: Aluminum
• • • • •	Doors: Four, with chrome handles
• • • • •	Fog lights: Multi-reflector halogen
• • • • •	Headlights: Auto-off with ignition switch
• • • • •	Headlights: Contoured multi-reflector halogen high beam
• • • • •	Headlights: Projector beam halogen low beam
• • • • •	Moonroof: Glass, power tilting and sliding with sunshade
◦ ◦ ◦ ◦ ◦	Roof Rack System: Crossbars
◦ ◦ ◦ ◦ ◦	Splash guards
• • • • •	Spoiler: Roof line, integrated brake light
• • • • •	Tires: 255/55 R18 104H Goodyear Eagle LS2 All-Season M+S
• • • • •	Tire (spare): Compact T165/80 R17 104M
• • • • •	Wheels: 18" x 8" aluminum alloy, 7-spoke Tribeca design with Subaru emblem
• • • • •	Windshield: Laminated and tinted green
• • • • •	Windows: Tinted (driver and front passenger doors)
• • • • •	Windows: Deep tinted green (rear quarter, doors and liftgate)
• • • • •	Window (rear): Defogger with timer
• • • • •	Wipers (windshield): Heated glass de-icer
• • • • •	Wipers (windshield): Variable intermittent with washer
• • • • •	Wiper (rear window): Intermittent and continuous mode with washer

- 5 Passenger
- 5 Passenger Limited
- 7 Passenger
- 7 Passenger Limited
- 7 Passenger Limited DVD+NAV

### Seating and Trim

• • • • •	Accents/trim: Silver metallic finish
• • • • •	Floor mats: "B9 Tribeca" embroidered
• - • - -	Interior: Premium woven cloth upholstery
- • - • •	Interior: Leather upholstery and interior trim
5 5 7 7 7	Seating capacity
• • • • •	Seat (driver's): 8-way power adjustable with lumbar support
• • • • •	Seat (front): Passenger, 4-way power adjustable with lumbar support
• • • • •	Seats (front): Heated with three level settings
• • • • •	Seats (front): Reclining bucket type
• • • • •	Seats (second row): 40/20/40-split, flat-folding and reclining
- - • • •	Seats (third row): 50/50-split, flat-folding

### Audio and Video

• - • - -	AM/FM/CD/MP3
- • - • •	AM/FM/6CD/MP3 Premium audio system
- - - - •	Auxillary input for audio/video source (RCA type) (rear)
• • • • •	Antenna: In-glass integrated
4 4 4 4 4	Speakers (main)
2 4 2 4 4	Speakers: Tweeters
◦ • ◦ • •	Speakers: Subwoofer
- - - - •	Rear seat DVD entertainment system (9" screen)
- - - - 2	Wireless headphones

### Warranties

3 years / 60,000 km "bumper-to-bumper" no deductible limited warranty  
 5 years / 100,000 km major components and powertrain  
 3 years / unlimited km CAA roadside assistance  
 See warranty book for details and limitations.

- 5 Passenger
- 5 Passenger Limited
- 7 Passenger
- 7 Passenger Limited
- 7 Passenger Limited DVD+NAV

### Convenience

• • • • •	Armrest (front): With console storage
• • • • •	Cup holders (front): Console integrated with lighting (2)
• • • • •	Cup holders (front): Door pocket integrated (2)
• • • • •	Cup holders (rear): Door pocket integrated (2)
• • • • •	Cup holders (rear): Centre armrest (2)
• • • • •	Cup holders (third row): Rear quarter trim integrated (2)
• • • • •	Door locks: Power, remote keyless entry (separate door and cargo access controls)
• • • • •	Glove box: Lockable and illuminated
• • • • •	HomeLink® System
• • • • •	Ignition key ring: Illuminated
• • • • •	Light: Rear door courtesy lights
• • • • •	Light: Interior dome with off delay
• • • • •	Light: Map spotlights
• • • • •	Power outlet: 12V in armrest console (2)
• • • • •	Storage: Centre console drawer
• • • • •	Storage: Driver and passenger seatback pockets
• • • • •	Storage: Front door compartments
• • • • •	Storage: Overhead compartment
• • • • •	Visor: Dual, with illuminated mirrors
• • • • •	Windows (power): Driver's window auto down
• • • • •	Windows (power): Illuminated switches

- 5 Passenger
- 5 Passenger Limited
- 7 Passenger
- 7 Passenger Limited
- 7 Passenger Limited DVD+NAV

### Instruments

• • • • •	Clock: In multi-function display	• standard
• • • • •	Gauges: Full needle sweep on start-up	• accessory
• • • • •	Gauges: Analog with red illuminated needles	- not available
• • • • •	Gauges: Electroluminescent	
- - - - •	GPS DVD-based navigation system with touch screen display	
• • • • •	Instrument panel: Automatic transmission Sport mode indicator (5EAT SS)	
• • • • •	Instrument panel: Automatic transmission SPORTSHIFT™ gear position indicator (5EAT SS)	
• • • • •	Instrument panel: Coolant temperature gauge	
• • • • •	Multi-function display: Monochrome	
- - - - •	Multi-function display: Colour, touch screen	
- - - - •	Monitor system: Trip computer, calculator, maintenance data, fuel economy	
• • • • •	Instrument panel: Fuel gauge with low fuel warning light	
• • • • •	Instrument panel: Headlights and fog lights "on" indicator	
• • • • •	Odometer: Digital, dual trip modes	
• • • • •	Speedometer: Electronically controlled analog	
• • • • •	Tachometer	
• • • • •	Trip computer: Elapsed time, ambient temperature, fuel economy, driving range	
• • • • •	Warning lights: ABS, airbag, brake fluid, oil pressure, check engine, door ajar warning, low washer fluid	

### Cargo Area

◦ ◦ ◦ ◦ ◦	Cargo tray/protective mat
• • • • •	Cargo tie down hooks
• • • • •	Light: Cargo area
• • • • •	Power outlet: 12V in cargo area
◦ ◦ ◦ ◦ ◦	Foldable cargo cover
• • • • •	Storage: Sub-floor tray
• • - - -	Storage: Secondary sub-floor compartment

## SUBARU PROTECTION PLAN

**3** LEVELS OF COVERAGE

- Powertrain CARE
- Major CARE
- Complete CARE

The only extended service contract backed by Subaru. See your dealer for details.

- 5 Passenger
- 5 Passenger Limited
- 7 Passenger
- 7 Passenger Limited
- 7 Passenger Limited DVD+NAV

- standard
- accessory
- not available

### Controls

•	•	•	•	•	Climate control: Air conditioning
•	•	•	•	•	Climate control: Automatic, dual zone
•	•	•	•	•	Climate control: Rear seat heating/ventilation/air conditioning ducts
-	-	•	•	•	Climate control: Rear cooling unit with adjustable fan and rear vents (4)
•	•	•	•	•	Cruise control: Steering wheel stalk controls
•	•	•	•	•	Gear selector: Leather-wrapped
•	•	•	•	•	Parking brake: Floor mounted
•	•	•	•	•	Steering wheel: Leather-wrapped with audio system controls
•	•	•	•	•	Steering wheel: Tilt adjustable

### Colours

G	G	G	G	G	Atlantic Blue Pearl
B	B	B	B	B	Champagne Gold Opal
B	B	B	B	B	Mahogany Red Pearl
G	G	G	G	G	Obsidian Black Pearl
-	G	-	-	G	Satin White Pearl
-	G	-	-	G	Seacrest Green Metallic
G	G	G	G	G	Titanium Silver Metallic

G Slate Grey interior B Desert Beige interior - not available

### Measurements

	5 Passenger	7 Passenger
Fuel economy: Automatic transmission (City/Hwy) (L/100km)	13.3/9.5	13.3/9.5
Fuel: Recommended minimum octane (AKI)	91	91
Fuel tank capacity (L)	64	64
Curb weight: Automatic transmission (kg)	1885	1910
Curb weight: Automatic transmission with leather interior and moonroof (kg)	1892	1916
Curb weight: Automatic transmission with leather interior, moonroof and navigation system (kg)	–	1926
Towing capacity: Maximum weight (kg) with trailer brakes and auxillary transmission cooler (optional) <sup>†</sup>	1587	1587
Towing capacity: Maximum weight (kg) with trailer brakes <sup>†</sup>	906	906
Length (mm)	4822	4822
Width (mm) with mirrors	2119	2119
Height (mm) with roof rails	1686	1686
Wheelbase (mm)	2749	2749
Minimum ground clearance (at curb weight) (mm)	213	213
Headroom: Front/second row/third row (mm)	988/970/–	988/970/920
Legroom: Front/second row/third row (mm)	1074/872/–	1074/872/784
EPA interior volume (L)	4015	4015
Cargo area: EPA volume (seats up) (L)	–	235
Cargo area: SAE volume (all seats folded flat) (L)	2106	2106
Cargo area: SAE volume (third row seats folded flat) (L)	1063	1063
Roof Rack System: Maximum load (kg)	67.5	67.5

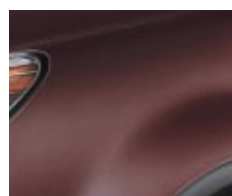
<sup>†</sup>See owner's manual for detailed towing instructions.



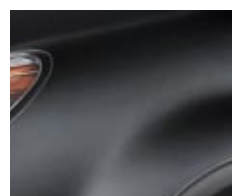
Atlantic Blue Pearl



Champagne Gold Opal



Mahogany Red Pearl



Obsidian Black Pearl



Satin White Pearl



Seacrest Green Metallic



Titanium Silver Metallic

The Supplemental Restraint System (SRS airbags) affords the driver and passenger additional protection in some collisions. This system provides supplemental protection only, and seatbelts must be worn in order to avoid injuries to out-of-position occupants upon airbag deployment. The combination of SRS and seatbelts provides the best protection in a serious accident. All illustrations, specifications, features and photographs contained in this brochure are based on product information available at the time of its printing, and may not be completely accurate following its publication. Colours shown may vary due to reproduction variations in the printing process, and some vehicle parts cannot be shown in certain photographs. Subaru Canada, Inc. reserves the right to discontinue or make changes at any time, without notice or incurring obligations, to colours, materials, equipment, accessories, features, specifications and models, or to change their prices. Some models shown may be from international markets and are not available in Canada, or they may be shown with equipment or accessories which are optional (at extra cost) or only available in certain combinations, or they may be subject to product delays or not be available in Canada. Please visit our Web site for the latest information and specifications. For complete details on product updates, warranties or the Subaru C.A.R.E. program, please contact your Subaru Dealer. Subaru, SUBARU BOXER, Subaru C.A.R.E. and Subaru C.A.R.E. Customer Assistance for Roadside Emergencies are registered trademarks. Subaru B9 Tribeca is a trademark. SPORTSHIFT is a registered trademark of Prodrive Ltd. HomeLink is a registered trademark of Johnson Controls, Inc. Printed in Canada. © 2005 Subaru Canada, Inc. 2006 Subaru B9 Tribeca model year.