






**WHAT'S NEW?**

The Outback is all new for the 2010 model year. The Outback is taller and wider than ever before, allowing for greater versatility and passenger volume. A 6-speed manual transmission and Lineartronic™ CVT (Continuously Variable Transmission) on models equipped with the 2.5-litre naturally aspirated engine help the Outback achieve excellent fuel economy despite its larger dimensions. For even more power, the 3.6-litre, 6-cylinder engine from the Tribeca replaces the outgoing model's 3.0-litre, 6-cylinder engine.

MODEL	SELECT NEW OR REVISED FEATURES (see specifications for complete list)
<p><b>All models</b></p>	<ul style="list-style-type: none"> <li>• Fully redesigned exterior and interior</li> <li>• All-new larger platform with more interior volume and cargo volume</li> <li>• 6-speed manual transmission, available Lineartronic™ CVT (Continuously Variable Transmission) with manual mode, including paddle shift controls (2.5 NA engine)</li> <li>• Electronic parking brake with driver-selectable Hill Holder system</li> <li>• Brake Assist</li> <li>• Steering wheel-integrated audio controls</li> <li>• Fully automatic headlights</li> <li>• Instrument cluster-mounted ECO gauge</li> <li>• Integrated swing-in-place crossbars</li> <li>• 10-way power-adjustable driver's seat, including power lumbar support</li> <li>• Reclining rear seats</li> </ul>
<p><b>Outback PZEV</b> (replaces 2.5i)</p> 	<ul style="list-style-type: none"> <li>• 17-inch alloy wheels</li> <li>• Body colour mirrors</li> <li>• AM/FM/CD/WMA 4-speaker sound system</li> </ul>
<p><b>Outback 2.5i Sport</b> (replaces PZEV Plus)</p> 	<ul style="list-style-type: none"> <li>• Windshield wiper de-icer</li> <li>• Auto-dimming rearview mirror with compass</li> <li>• MediaHub for iPod® and USB integration</li> <li>• Driver's auto-up power window</li> <li>• blueconnect® Bluetooth® hands-free system (voice-activated)</li> </ul> <p>➔ <b>Limited Package</b> Lineartronic™ CVT</p> <p>↓</p> <p><b>Available Multimedia Option:</b></p> <ul style="list-style-type: none"> <li>• Voice-activated navigation</li> <li>• Voice-activated Bluetooth®</li> <li>• Rear-view camera</li> <li>• Bluetooth® streaming audio</li> </ul>
<p><b>Outback 3.6R</b></p> 	<ul style="list-style-type: none"> <li>• Larger, more powerful, 3.6-litre, 6-cylinder SUBARU BOXER engine</li> <li>• Larger front and rear disc brakes</li> <li>• Standard premium cloth interior</li> <li>• Manual climate control</li> <li>• AM/FM/CD/WMA 4-speaker sound system</li> </ul> <p>➔ <b>Limited Package</b></p> <p>↓</p> <p><b>Available Multimedia Option:</b></p> <ul style="list-style-type: none"> <li>• Voice-activated navigation</li> <li>• Voice-activated Bluetooth®</li> <li>• Rear-view camera</li> <li>• Bluetooth® streaming audio</li> </ul>

Product details based on the latest information available at the time of publication and are subject to change without notice or incurring obligation. © 2009 Subaru Canada, Inc.

# MODEL OVERVIEW

## 2010 OUTBACK



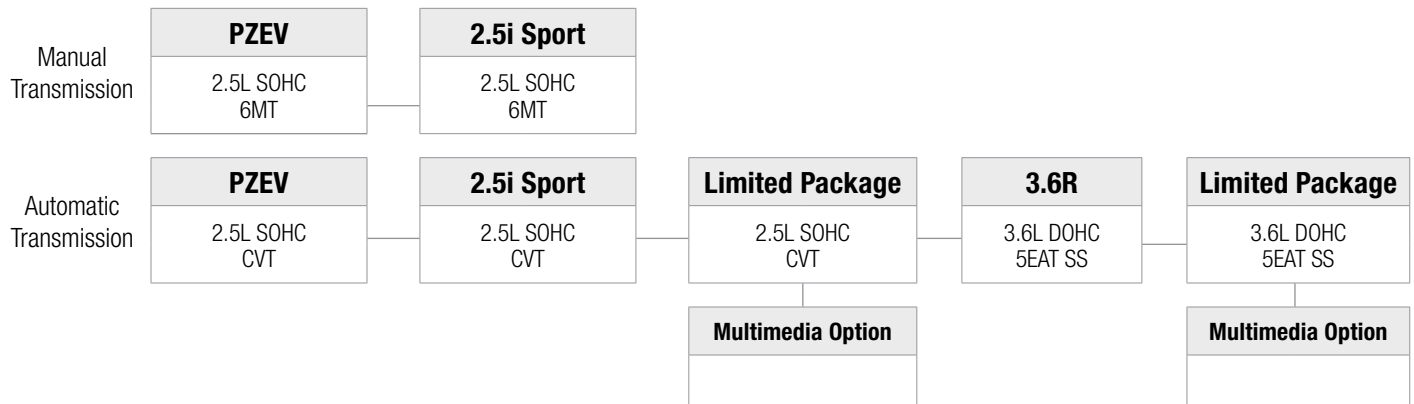
- 1** The side panel of the Outback is now one piece, compared to five pieces for the previous generation. This increases precision, improves quality and reduces weight.
- 2** Innovative raised-profile roof rails with integrated swing-in-place crossbars afford an SUV-like profile. When not used, the crossbars swing aside to reduce fuel consumption and lower wind noise.
- 3** Despite being 20 mm shorter than the previous generation, the 2010 Outback has a 70 mm longer wheelbase for a smoother ride.
- 4** Dark lower cladding emphasizes Outback's impressive ground clearance, which is greater than many conventional SUVs.
- 5** Aggressive wheel arches give the Outback an SUV-like stance, and draw the eye to the standard 17-inch aluminum wheels.
- 6** Standard front fog lights add to the Outback's go-anywhere appeal and provide crisp illumination in adverse conditions.
- 7** Standard fully automatic headlamps are standard on all Outback models for added active safety, day or night.
- 8** The Outback's grille closely resembles Tribeca's grille, reaffirming Outback's position as the SUV alternative.



- 1** The 2010 Outback offers right-sized versatility with more cargo volume with the rear seats up than the previous generation.
- 2** Drivers can keep both hands on the wheel with an available blueconnect® Bluetooth® hands-free system and voice-activated navigation system with integrated Bluetooth® technology.
- 3** Every Outback is equipped with a 10-way power-adjustable driver's seat, including power lumbar support. A comfortable driver is an alert driver.
- 4** The design of the front seat has been optimized to reduce whiplash in a rear collision, negating the need for anti-whiplash head restraints, allowing for a more comfortable design.
- 5** A MediaHub for iPod® and USB integration is standard on most models. Now an iPod® or USB can be controlled directly through the audio system and steering wheel controls.
- 6** Rear seat occupants can easily get comfortable with standard reclining rear seats and more leg, shoulder and hip room as compared to the previous generation.

Product details based on the latest information available at the time of publication and are subject to change without notice or incurring obligation. © 2009 Subaru Canada, Inc.

# MODEL LINEUP 2010 OUTBACK



## Outback PZEV

Horizontally opposed, 4-cylinder, 2.5L SUBARU BOXER engine with i-Active Valve Lift System and PZEV emissions equipment

170 horsepower and 170 lb-ft of torque

6-speed Manual Transmission (6MT) or optional Lineartronic™ CVT (Continuously Variable Transmission) with paddle shift controls

Subaru symmetrical full-time All-Wheel Drive

Vehicle Dynamics Control system and Traction Control System

Anti-lock Braking System with Electronic Brake-force Distribution (EBD) and Brake Assist

Front brakes: Ventilated discs (294 x 24 mm), dual-piston calipers

Rear brakes: Solid discs (286 x 10 mm), single-piston calipers

Electronic parking brake and driver-selectable Hill Holder system

Driver and front passenger front and side-impact airbags; side curtain airbags with rollover sensor

Whiplash-reducing front seats with height-adjustable head restraints

17-inch aluminum alloy wheels with Continental ContiProContact™ All-Season tires

Splash guards

Power-adjustable and heated door mirrors (body colour)

Fully automatic headlights

Multi-reflector halogen fog lights

Raised-profile roof rails with integrated swing-in-place crossbars

Privacy tinted glass on rear doors and cargo area

"PZEV" badge and embroidered floor mats

AM/FM/CD/MP3/WMA audio system with 4 speakers, auxiliary audio input and steering wheel-integrated controls

Tilt-adjustable, telescopic steering wheel with integrated cruise controls

Low oil and low windshield washer fluid warning indicators

Power windows (driver's auto down)

Heated front seats; 10-way power-adjustable driver's seat including lumbar support

60/40-split, flat-folding and reclining rear seats

Premium cloth upholstery

## Limited Package:

Available on Outback 2.5i Sport (Lineartronic™ CVT) and 3.6R (5EAT SS)

Premium AM/FM/6CD/MP3/WMA audio system

440-watt Harman Kardon® amplifier

9-speaker Harman Kardon® system including subwoofer

Automatic dual-zone climate control

4-way power-adjustable passenger seat

Woodgrain interior trim

Perforated leather seating surfaces

Brushed aluminum door sills

Available Multimedia Option

## MULTIMEDIA OPTION

(Available on Outback 2.5i Limited Package and 3.6R Limited Package)

AM/FM/CD/MP3/WMA audio system, voice-activated Bluetooth® hands-free system, Bluetooth® streaming audio, rear-view camera, DVD playback, voice-activated GPS DVD-based navigation and monitor system featuring a colour touchscreen with calendar and calculator.



### Outback 2.5i Sport

Horizontally opposed, 4-cylinder, 2.5L SUBARU BOXER engine with i-Active Valve Lift system

170 horsepower and 170 lb-ft of torque

6-speed Manual Transmission (6MT) or optional Lineartronic™ CVT (Continuously Variable Transmission) with paddle shift controls

Subaru symmetrical full-time All-Wheel Drive

Vehicle Dynamics Control system and Traction Control System

Anti-lock Braking System with Electronic Brake-force Distribution (EBD) and Brake Assist

Front brakes: Ventilated discs (294 x 24 mm), dual-piston calipers

Rear brakes: Solid discs (286 x 10 mm), single-piston calipers

Electronic parking brake and driver-selectable Hill Holder system

Driver and front passenger front and side-impact airbags; side curtain airbags with rollover sensor

Whiplash-reducing front seats with height-adjustable head restraints

17-inch aluminum alloy wheels with Continental ContiProContact™ All-Season tires

Splash guards

Power-adjustable and heated door mirrors (body colour)

Multi-reflector halogen fog lights

Raised-profile roof rails with integrated swing-in-place crossbars

Privacy tinted glass on rear doors and cargo area

Windshield wiper de-icer

Fully automatic headlights

Power tilting and sliding glass moonroof

AM/FM/CD/MP3/WMA audio system with 4 speakers, auxiliary audio input and steering wheel-integrated controls

SIRIUS® Satellite Radio installed (free 3-month trial subscription included)

MediaHub for iPod®/USB audio integration

Voice-activated blueconnect® Bluetooth® hands-free system

Auto-dimming rearview mirror with compass

Tilt-adjustable, telescopic steering wheel with integrated cruise controls

Leather-wrapped steering wheel and gear selector (6MT)

Low oil and low windshield washer fluid warning indicators

Power windows (driver's auto up/down)

Heated front seats; 10-way power-adjustable driver's seat including lumbar support

60/40-split, flat-folding and reclining rear seats

Cargo area tray

Premium cloth upholstery

### Outback 3.6R

Horizontally opposed, 6-cylinder, 3.6L SUBARU BOXER engine with Dual Active Valve Control System

256 horsepower and 247 lb-ft of torque

5-speed Electronic Direct Control Automatic Transmission with SPORTSHIFT® (5EAT SS), blipping control and paddle shift controls

Subaru symmetrical full-time All-Wheel Drive

Vehicle Dynamics Control system and Traction Control System

Anti-lock Braking System with Electronic Brake-force Distribution (EBD) and Brake Assist

Front brakes: Ventilated discs (316 x 30 mm), dual-piston calipers

Rear brakes: Ventilated discs (290 x 18 mm), single-piston calipers

Electronic parking brake and driver-selectable Hill Holder system

Driver and front passenger front and side-impact airbags; side curtain airbags with rollover sensor

Whiplash-reducing front seats with height-adjustable head restraints

17-inch aluminum alloy wheels with Continental ContiProContact™ All-Season tires

Splash guards

Power-adjustable and heated door mirrors (body colour)

Multi-reflector halogen fog lights

Raised-profile roof rails with integrated swing-in-place crossbars

Privacy tinted glass on rear doors and cargo area

Windshield wiper de-icer

Fully automatic headlights

Power tilting and sliding glass moonroof

AM/FM/CD/MP3/WMA audio system with 4 speakers, auxiliary audio input and steering wheel-integrated controls

SIRIUS® Satellite Radio installed (free 3-month trial subscription included)

MediaHub for iPod®/USB audio integration

Voice-activated blueconnect® Bluetooth® hands-free system

Auto-dimming rearview mirror with compass

Tilt-adjustable, telescopic steering wheel with integrated cruise controls

Leather-wrapped steering wheel

Low oil and low windshield washer fluid warning indicators

Power windows (driver's auto up/down)

Heated front seats; 10-way power-adjustable driver's seat including lumbar support

60/40-split, flat-folding and reclining rear seats

Cargo area tray

Premium cloth upholstery

# VEHICLE SPECIFICATIONS 2010 OUTBACK



	PZEV	2.5i Sport	3.6R
<b>Measurements</b>			
<b>FUEL ECONOMY</b>			
Manual transmission (City/Hwy) (L/100km)	10.6/7.4	10.6/7.4	–
Automatic transmission (City/Hwy) (L/100km)	9.5/6.9	9.5/6.9	11.8/8.2
Recommended minimum octane (AKI)	87	87	87
Fuel tank capacity (L)	70	70	70
<b>GENERAL WEIGHTS</b>			
Curb weight: Manual transmission (kg)	1542	1556	–
Curb weight: Automatic transmission (kg)	1591	1606	1648
Gross Vehicle Weight Rating (GVWR) (kg)	2080	2080	2130
<b>TOWING CAPACITY</b> ( <sup>†</sup> Please review Owner's Manual for details)			
Maximum weight (kg) with trailer brakes <sup>†</sup>	1227	1227	1363
Maximum tongue weight (kg)	91	91	91
<b>EXTERIOR</b>			
Length (mm)	4780	4780	4780
Width (mm) without mirrors	1820	1820	1820
Width (mm) with mirrors	2050	2050	2050
Height (mm) with roof rails	1670	1670	1670
Wheelbase (mm)	2740	2740	2740
Track: Front (mm)	1550	1550	1550
Track: Rear (mm)	1550	1550	1550
Minimum ground clearance (at curb weight) (mm)	220	220	220
Steering: Turns (lock-to-lock)	3.2	3.2	3.2
Steering: Turning circle (curb-to-curb) (m)	5.6	5.6	5.6
Drag coefficient (cd)	0.35	0.35	0.35

Product details based on the latest information available at the time of publication and are subject to change without notice or incurring obligation. © 2009 Subaru Canada, Inc.

# VEHICLE SPECIFICATIONS

## 2010 OUTBACK



	PZEV	2.5i Sport	3.6R
<b>INTERIOR</b>			
Headroom: Front (mm)	1036	982	982
Headroom: Rear (mm)	999	999	999
Legroom: Front (mm)	1091	1091	1091
Legroom: Rear (mm) (minimum)	960	960	960
Shoulder room: Front (mm)	1430	1430	1430
Shoulder room: Rear (mm)	1426	1426	1426
Hip room: Front (mm)	1384	1384	1384
Hip room: Rear (mm)	1370	1370	1370
EPA passenger volume (L)	2984	2899	2899
<b>CARGO AREA</b>			
Cargo volume (seats up) (L)	972	972	972
Cargo volume (seats folded flat) (L)	2019	2019	2019
Floor length (seats folded flat) (mm)	1790	1790	1790
Floor length (seats up) (mm)	1045	1045	1045
Height (mm)	739	739	739
Rear gate opening width at floor (mm)	1083	1083	1083
Tailgate to ground height (mm)	756	756	756
Width between wheel wells (mm)	1090	1090	1090

Product details based on the latest information available at the time of publication and are subject to change without notice or incurring obligation. © 2009 Subaru Canada, Inc.

# VEHICLE SPECIFICATIONS

## 2010 OUTBACK



	PZEV	2.5i Sport	3.6R
<b>GEAR RATIOS</b>			
<b>Manual Transmission (6MT):</b>			
First Gear	3.454	3.454	–
Second Gear	1.947	1.947	–
Third Gear	1.296	1.296	–
Fourth Gear	0.972	0.972	–
Fifth Gear	0.825	0.825	–
Sixth Gear	0.695	0.695	–
Reverse Gear	3.636	3.636	–
Final Drive Ratio	4.444	4.444	–
<b>Lineartronic™ CVT (Continuously Variable Transmission) - Simulated Manual Mode:</b>			
First Gear	3.525	3.525	–
Second Gear	2.238	2.238	–
Third Gear	1.641	1.641	–
Fourth Gear	1.194	1.194	–
Fifth Gear	0.850	0.850	–
Sixth Gear	0.611	0.611	–
Reverse Gear	2.358	2.358	–
Final Drive Ratio	3.900	3.900	–
<b>Automatic Transmission with SPORTSHIFT® (5EAT SS):</b>			
First Gear	–	–	3.540
Second Gear	–	–	2.264
Third Gear	–	–	1.471
Fourth Gear	–	–	1.000
Fifth Gear	–	–	0.834
Reverse Gear	–	–	2.370
Final Drive Ratio	–	–	3.083

Product details based on the latest information available at the time of publication and are subject to change without notice or incurring obligation. © 2009 Subaru Canada, Inc.



## EXTERIOR COLOURS



Crystal Black Silica



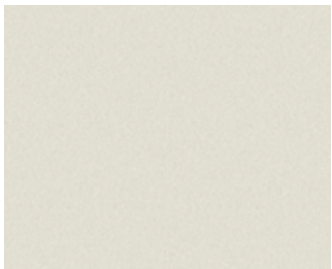
Cypress Green Pearl



Graphite Grey Metallic



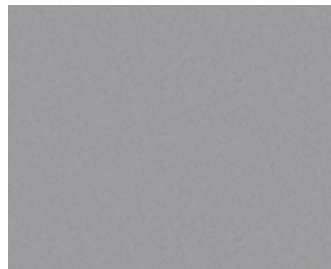
Harvest Gold Metallic



Satin White Pearl

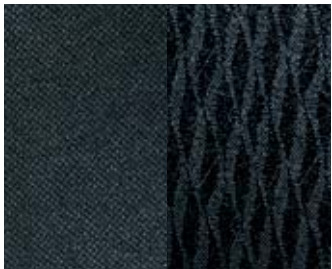


Sky Blue Metallic



Steel Silver Metallic

## UPHOLSTERY



Black Cloth



Ivory Cloth



Black Leather



Ivory Leather

## WHEELS



17-inch Aluminum Alloy,  
6-spoke design

Product details based on the latest information available at the time of publication and are subject to change without notice or incurring obligation. © 2009 Subaru Canada, Inc.



VEHICLE PRICING

MODEL	ENGINE	TRANSMISSION	MSRP
PZEV	2.5L SOHC	6MT	\$ 28,995
		CVT	\$ 30,195
2.5i Sport	2.5L SOHC	6MT	\$ 31,795
		CVT	\$ 32,995
2.5i Limited Package	2.5L SOHC	CVT	\$ 35,795
2.5i Limited Package with Multimedia Option	2.5L SOHC	CVT	\$ 38,095
3.6R	3.6L DOHC	5EAT SS	\$ 35,695
3.6R Limited Package	3.6L DOHC	5EAT SS	\$ 38,495
3.6R Limited Package with Multimedia Option	3.6L DOHC	5EAT SS	\$ 40,795

ALL PRICES ALONG WITH SPECIFICATIONS ARE SUBJECT TO CHANGE WITHOUT NOTICE. THE DEALER MAY SELL BELOW SUGGESTED RETAIL WITHOUT FEAR OF RECRIMINATION FROM SUBARU CANADA, INC. MSRP SHOWN EXCLUDES EXCISE TAX FOR AIR CONDITIONING, INLAND FREIGHT AND PRE-DELIVERY CHARGES. MSRP DOES NOT INCLUDE APPLICABLE TAXES.

COLOUR AVAILABILITY

EXTERIOR COLOUR	COLOUR CODE	PZEV	2.5i Sport				3.6R		
				Limited Package			Limited Package		
					Multimedia Option			Multimedia Option	
Crystal Black Silica	4S	▲	▲	▲ / □	▲ / □	▲	▲ / □	▲ / □	
Cypress Green Pearl	4T	□	□	□	□	□	□	□	
Graphite Grey Metallic	3T	▲	▲	▲	▲	▲	▲	▲	
Harvest Gold Metallic	9K	□	□	□	□	□	□	□	
Satin White Pearl	7J	▲	▲	▲	▲	▲	▲	▲	
Sky Blue Metallic	7F	▲	▲	▲	▲	▲	▲	▲	
Steel Silver Metallic	6Z	▲	▲	▲	▲	▲	▲	▲	
INTERIOR TRIM		Cloth	Cloth	Leather	Leather	Cloth	Leather	Leather	

▲ : Black □ : Ivory

Product details based on the latest information available at the time of publication and are subject to change without notice or incurring obligation. © 2009 Subaru Canada, Inc.