






MODEL	SELECT NEW OR REVISED FEATURES (see specifications for complete list)
<p><b>All models</b></p>	<ul style="list-style-type: none"> <li>• Folding side-view mirrors</li> <li>• New colours: Caramel Bronze Pearl, Sky Blue Metallic (not available on 2.5GT Limited)</li> <li>• Deleted colour: Harvest Gold Metallic</li> </ul>
<p><b>Legacy 2.5i</b></p> 	<p><b>Convenience Package (New) (Lineartronic® CVT only)</b></p> <ul style="list-style-type: none"> <li>• Voice-activated blueconnect® Bluetooth® hands-free system</li> <li>• 10-way power-adjustable driver's seat</li> <li>• 16-inch aluminum alloy wheels</li> <li>• Stainless steel exhaust tip</li> <li>• PZEV becomes an option</li> </ul> <p>➔ <b>Sport Package</b></p> <ul style="list-style-type: none"> <li>• Front fog lights</li> </ul> <p>↓</p> <p><b>Limited Package</b></p> <ul style="list-style-type: none"> <li>• No changes</li> </ul>
<p><b>Legacy 2.5GT</b></p> 	<ul style="list-style-type: none"> <li>• Simulated carbon-fibre interior trim (doors, instrument panel)</li> <li>• Silver stitching</li> <li>• Aluminum pedals</li> <li>• Front fog lights</li> </ul>
<p><b>Legacy 3.6R</b></p> 	<ul style="list-style-type: none"> <li>• No changes</li> </ul>

Product details based on the latest information available at the time of publication and are subject to change without notice or incurring obligation. © 2010 Subaru Canada, Inc.

# MODEL OVERVIEW 2011 LEGACY



2.5GT shown

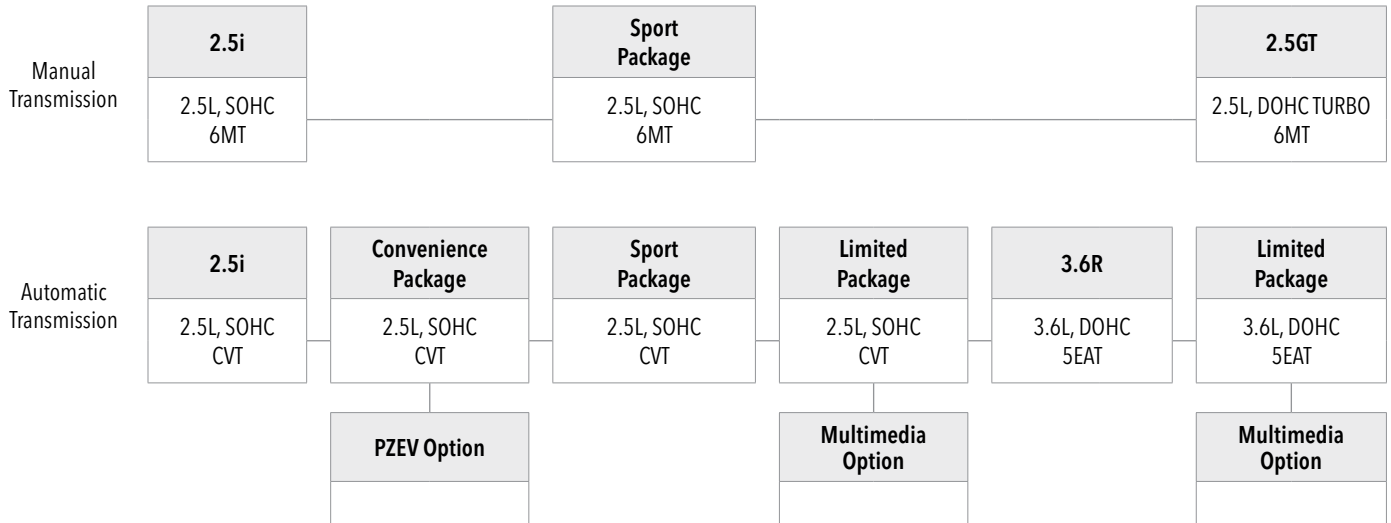
- ❶ Despite being taller, the 2011 Legacy is more aerodynamic than the previous generation with a drag coefficient of just 0.29. Less drag means lower fuel consumption and less wind noise.
- ❷ Standard folding side view mirrors will be appreciated by anyone who parks on the street or in a tight garage.
- ❸ Unlike many competitors, the Legacy's trunk lid is supported by hydraulic struts resulting in more useable space.
- ❹ The rear door openings are 78% wider than the previous generation, particularly noticeable when helping someone get seated or when installing a child seat.
- ❺ Four unique wheel designs are available, ranging from 16-inch steel wheels with wheel covers to aggressive 18-inch aluminum alloys.
- ❻ While only 30 mm longer than the previous generation, the 2011 Legacy is the roomiest Legacy ever offered thanks to better space utilization, reduced overhangs and a longer wheelbase.
- ❼ Fog lights on the 2.5i Sport Package and 2.5GT improve visibility and add an aggressive flair to front end styling.
- ❽ The Legacy features Subaru's latest interpretation of the "Spread Wing" grille, a subtle cue to Subaru's aviation heritage.



- ❶ An available Bluetooth® hands-free system and voice-activated navigation system let drivers keep both hands on the wheel for added active safety.
- ❷ Centre console versatility and storage is enhanced now that the parking brake lever has been replaced by an electronic parking brake system.
- ❸ New simulated carbon fibre interior trim helps to further differentiate the 2.5GT from other Legacy models.
- ❹ The front seat design has been optimized to reduce whiplash in a rear collision. As such, the anti-whiplash head restraints were replaced with a more comfortable design.
- ❺ A MediaHub for iPod® and USB integration is standard on most models. Now an iPod® or USB can be controlled directly through the audio system.
- ❻ The seatback of the front seats have been sculpted to provide additional rear passenger knee room.

Product details based on the latest information available at the time of publication and are subject to change without notice or incurring obligation. © 2010 Subaru Canada, Inc.

# MODEL LINEUP 2011 LEGACY



## Legacy 2.5i

Horizontally opposed, 4-cylinder, 2.5L SUBARU BOXER engine with i-Active Valve Lift System  
 170 horsepower and 170 lb-ft of torque  
 6-speed Manual Transmission (6MT) or optional Lineartronic® CVT (Continuously Variable Transmission) with paddle shift controls  
 Subaru symmetrical full-time All-Wheel Drive  
 Vehicle Dynamics Control system and Traction Control System  
 Anti-lock Braking System with Electronic Brake-force Distribution (EBD) and Brake Assist  
 Front brakes: Ventilated discs (294 x 24 mm), dual-piston calipers  
 Rear brakes: Solid discs (286 x 10 mm), single-piston calipers  
 Electronic parking brake and driver-selectable Hill Holder system  
 Driver and front passenger front and side-impact airbags; side curtain airbags

Whiplash-reducing front seats with height-adjustable head restraints  
 16-inch steel wheels with wheel covers and Bridgestone® Turanza™ All-Season tires  
 Power-adjustable, foldable, heated body-colour door mirrors  
 Fully automatic headlights  
 AM/FM/CD/MP3/WMA audio system with 4 speakers, auxiliary audio input and steering wheel-integrated controls  
 Tilt-adjustable, telescopic steering wheel with integrated cruise control  
 Low oil and low windshield washer fluid warning indicators  
 Power windows (driver's auto down)  
 Heated front seats  
 60/40-split, flat-folding rear seats  
 Premium cloth upholstery

### Convenience Package: Available on Legacy 2.5i (Lineartronic® CVT only)

16-inch aluminum alloy wheels with Bridgestone® Turanza™ All-Season tires  
 Stainless steel exhaust tip  
 10-way power-adjustable driver's seat including lumbar support  
 Voice-activated blueconnect® Bluetooth® hands-free system

### PZEV OPTION:

Available on Legacy 2.5i Convenience Package  
 PZEV emissions equipment  
 PZEV rear badge  
 PZEV embroidered floor mats

Product details based on the latest information available at the time of publication and are subject to change without notice or incurring obligation. © 2010 Subaru Canada, Inc.



**Sport Package:** Available on Legacy 2.5i

17-inch aluminum alloy wheels with Bridgestone® Turanza™ All-Season tires  
Power tilting and sliding glass sunroof  
Low-profile rear spoiler with integrated brake light  
Windshield wiper de-icer  
Stainless steel exhaust tip  
10-way power-adjustable driver's seat including lumbar support  
Leather-wrapped steering wheel and gear selector (6MT)

Multi-reflector halogen fog lights  
Auto-dimming rearview mirror with compass  
Power windows (driver's auto up/down)  
MediaHub for iPod®/USB audio integration  
SIRIUS® Satellite Radio installed  
(free 3-month trial subscription included)  
Voice-activated blueconnect® Bluetooth® hands-free system

**Limited Package:** Available on Legacy 2.5i (Lineartronic® CVT) and 3.6R (5EAT)

17-inch aluminum alloy wheels with Bridgestone® Turanza™ All-Season tires  
Power tilting and sliding glass sunroof  
Windshield wiper de-icer  
Stainless steel exhaust tip(s)  
Premium AM/FM/6CD/MP3/WMA audio system  
9-speaker Harman Kardon® system including subwoofer  
440-watt Harman Kardon® amplifier  
MediaHub for iPod®/USB audio integration  
SIRIUS® Satellite Radio installed (free 3-month trial subscription included)  
Voice-activated blueconnect® Bluetooth® hands-free system  
Automatic dual-zone climate control with synchronization  
Auto-dimming rearview mirror with compass  
Power windows (driver's auto up/down)  
Leather-wrapped steering wheel  
Woodgrain interior trim  
Brushed aluminum front door sills  
10-way power-adjustable driver's seat including lumbar support  
and 4-way power-adjustable passenger seat  
Perforated leather seating surfaces  
Available Multimedia Option

**MULTIMEDIA OPTION:**

Available on Legacy 2.5i Limited Package and 3.6R Limited Package

AM/FM/CD/MP3/WMA audio system, voice-activated Bluetooth® hands-free system, Bluetooth® streaming audio, rear-view camera, DVD playback, voice-activated GPS DVD-based navigation and monitor system featuring a colour touchscreen, calendar and calculator.

Product details based on the latest information available at the time of publication and are subject to change without notice or incurring obligation. © 2010 Subaru Canada, Inc.



### Legacy 3.6R

Horizontally opposed, 6-cylinder, 3.6L SUBARU BOXER engine with Dual Active Valve Control System

256 horsepower and 247 lb-ft of torque

5-speed Electronic Direct Control Automatic Transmission with Manual Mode (5EAT), blipping control and paddle shift controls

Subaru symmetrical full-time All-Wheel Drive

Vehicle Dynamics Control system and Traction Control System

Anti-lock Braking System with Electronic Brake-force Distribution (EBD) and Brake Assist

Front brakes: Ventilated discs (316 x 30 mm), dual-piston calipers

Rear brakes: Ventilated discs (290 x 18 mm), single-piston calipers

Electronic parking brake and driver-selectable Hill Holder system

Driver and front passenger front and side-impact airbags; side curtain airbags

Whiplash-reducing front seats with height-adjustable head restraints

17-inch aluminum alloy wheels with Bridgestone® Turanza™ All-Season tires

Power-adjustable, foldable, heated body-colour door mirrors

Fully automatic headlights

Windshield wiper de-icer

Twin muffler exhaust with stainless steel tips

Power tilting and sliding glass sunroof

AM/FM/CD/MP3/WMA audio system with 4 speakers, auxiliary audio input and steering wheel-integrated controls

MediaHub for iPod®/USB audio integration

Voice-activated blueconnect® Bluetooth® hands-free system

SIRIUS® Satellite Radio installed (3-month trial subscription included)

Tilt-adjustable, telescopic steering wheel with integrated cruise control

Leather-wrapped steering wheel

Low oil and low windshield washer fluid warning indicators

Power windows (driver's auto up/down)

Auto-dimming rearview mirror with compass

Heated front seats; 10-way power-adjustable driver's seat including lumbar support

60/40-split, flat-folding rear seats

Premium cloth upholstery

### Legacy 2.5GT

Turbocharged and intercooled, horizontally opposed, 4-cylinder, 2.5L SUBARU BOXER engine with Dual Active Valve Control System

265 horsepower and 258 lb-ft of torque

6-speed Manual Transmission (6MT)

Subaru symmetrical full-time All-Wheel Drive

Vehicle Dynamics Control system and Traction Control System

Anti-lock Braking System with Electronic Brake-force Distribution (EBD) and Brake Assist

Front brakes: Ventilated discs (316 x 30 mm), dual-piston calipers

Rear brakes: Ventilated discs (290 x 18 mm), single-piston calipers

Electronic parking brake and driver-selectable Hill Holder system

Driver and front passenger front and side-impact airbags; side curtain airbags

Whiplash-reducing front seats with height-adjustable head restraints

18-inch aluminum alloy wheels with Bridgestone® Potenza™

Summer Performance tires

Power-adjustable, foldable, heated body-colour door mirrors

Fully automatic headlights

Windshield wiper de-icer

Functional hood scoop

Twin muffler exhaust with stainless steel tips

Power tilting and sliding glass sunroof

Low-profile rear spoiler with integrated brake light

Multi-reflector halogen fog lights

AM/FM/CD/MP3/WMA audio system with 9-speaker Harman Kardon® system, 440-watt Harman Kardon® amplifier, auxiliary audio input and steering wheel-integrated controls

MediaHub for iPod®/USB audio integration with Bluetooth® streaming audio

SIRIUS® Satellite Radio installed (free 3-month trial subscription included)

GPS DVD-based navigation system (voice-activated) with DVD playback

Voice-activated Bluetooth® hands-free system

Rear-view camera

Automatic dual-zone climate control with synchronization

Tilt-adjustable, telescopic steering wheel with integrated cruise control

Leather-wrapped steering wheel and gear selector

Simulated carbon fibre interior trim

Aluminum alloy sport pedals

Low oil and low windshield washer fluid warning indicators

Power windows (driver's auto up/down)

Auto-dimming rearview mirror with compass

Heated front seats; 10-way power-adjustable driver's seat including lumbar support and 4-way power-adjustable passenger seat

60/40-split, flat-folding rear seats

Perforated leather seating surfaces with silver stitching

# VEHICLE SPECIFICATIONS

## 2011 LEGACY



	2.5i	2.5GT	3.6R
<b>Measurements</b>			
<b>FUEL ECONOMY</b>			
Manual transmission (City/Hwy) (L/100 km)	10.6/7.4	11.5/8.0	-
Manual transmission (City/Hwy) (Imperial MPG)	27/38	25/35	-
Automatic transmission (City/Hwy) (L/100 km)	9.1/6.4	-	11.8/8.2
Automatic transmission (City/Hwy) (Imperial MPG)	31/44	-	24/34
Recommended minimum octane (AKI) (*required octane)	87	91*/93	87
Fuel tank capacity (L)	70	70	70
<b>GENERAL WEIGHTS</b>			
Curb weight: Manual transmission (kg)	1485	1580	-
Curb weight: Automatic transmission (kg)	1534	-	1598
Gross Vehicle Weight Rating (GVWR) (kg)	2010	2060	2100
<b>EXTERIOR</b>			
Length (mm)	4735	4735	4735
Width (mm) without mirrors	1820	1820	1820
Width (mm) with mirrors	2050	2050	2050
Height (mm)	1505	1505	1505
Wheelbase (mm)	2750	2750	2750
Track: Front (mm)	1565	1550	1565
Track: Rear (mm)	1570	1555	1570
Minimum ground clearance (at curb weight) (mm)	150	150	150
Steering: Turns (lock-to-lock)	2.9	2.9	2.9
Steering: Minimum turning circle (curb-to-curb) (m)	11.2	11.2	11.2
Drag coefficient (cd)	0.29	0.29	0.29
<b>INTERIOR</b>			
Headroom: Front (mm)	1024	967	967
Headroom: Rear (mm)	951	951	951
Legroom: Front (mm)	1091	1091	1091
Legroom: Rear (mm) (minimum)	960	960	960
Shoulder room: Front (mm)	1430	1430	1430
Shoulder room: Rear (mm)	1426	1426	1426
Hip room: Front (mm)	1384	1384	1384
Hip room: Rear (mm)	1370	1370	1370
EPA passenger volume (L)	2918	2833	2833
<b>CARGO AREA</b>			
EPA trunk volume (L)	415	415	415
Height at opening (mm)	690	690	690
Width at opening (mm)	940	940	940

Product details based on the latest information available at the time of publication and are subject to change without notice or incurring obligation. © 2010 Subaru Canada, Inc.

# VEHICLE SPECIFICATIONS

## 2011 LEGACY



	2.5i	2.5GT	3.6R
<b>GEAR RATIOS</b>			
<b>Manual Transmission (6MT):</b>			
First Gear	3.454	3.454	-
Second Gear	1.947	1.947	-
Third Gear	1.296	1.296	-
Fourth Gear	0.972	0.972	-
Fifth Gear	0.825	0.780	-
Sixth Gear	0.695	0.666	-
Reverse Gear	3.636	3.636	-
Final Drive Ratio	4.111	4.111	-
<b>Lineartronic® CVT (Continuously Variable Transmission) - simulated manual mode:</b>			
First Gear	3.525	-	-
Second Gear	2.238	-	-
Third Gear	1.641	-	-
Fourth Gear	1.194	-	-
Fifth Gear	0.850	-	-
Sixth Gear	0.611	-	-
Reverse Gear	2.358	-	-
Final Drive Ratio	3.700	-	-
<b>Automatic Transmission with Manual Mode (5EAT):</b>			
First Gear	-	-	3.540
Second Gear	-	-	2.264
Third Gear	-	-	1.471
Fourth Gear	-	-	1.000
Fifth Gear	-	-	0.834
Reverse Gear	-	-	2.370
Final Drive Ratio	-	-	3.083

Product details based on the latest information available at the time of publication and are subject to change without notice or incurring obligation. © 2010 Subaru Canada, Inc.

● Standard  
- Not Available

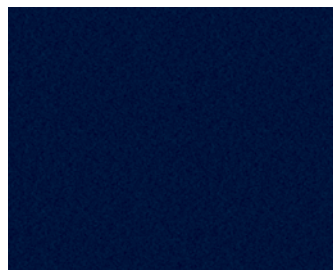
**CP** Standard with Convenience Package  
**SP** Standard with Sport Package  
**LP** Standard with Limited Package

○ Optional  
1 Also available as an accessory

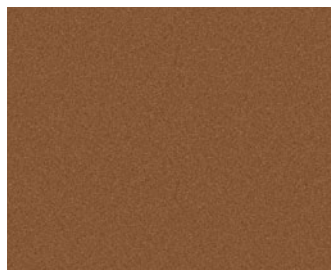




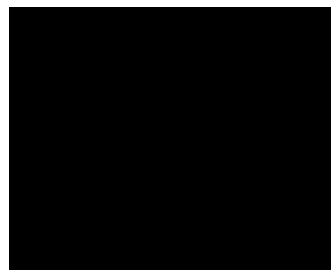
## EXTERIOR COLOURS



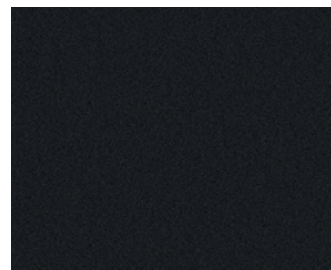
Azurite Blue Pearl



Caramel Bronze Pearl



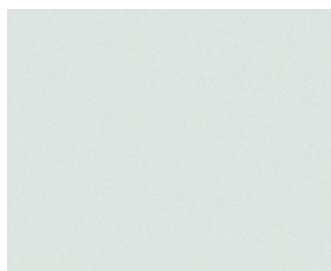
Crystal Black Silica



Graphite Grey Metallic



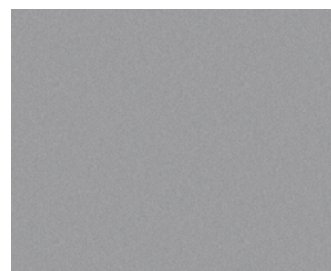
Ruby Red Pearl



Satin White Pearl

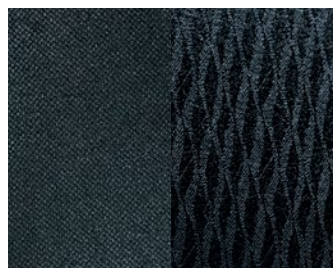


Sky Blue Metallic



Steel Silver Metallic

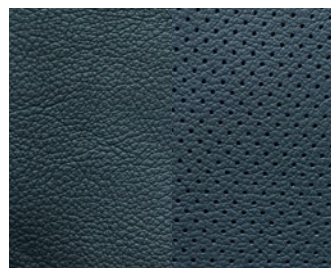
## UPHOLSTERY



Black Cloth



Ivory Cloth



Black Leather



Ivory Leather

## WHEELS



16-inch Steel  
(2.5i)



16-inch Aluminum Alloy  
(Convenience Package)



17-inch Aluminum Alloy  
(Sport Package, Limited Package, 3.6R)



18-inch Aluminum Alloy  
(2.5GT)

Product details based on the latest information available at the time of publication and are subject to change without notice or incurring obligation. © 2010 Subaru Canada, Inc.



VEHICLE PRICING

MODEL	ENGINE	TRANSMISSION	MSRP
2.5i	2.5L SOHC	6MT	\$23,995
		CVT	\$25,195
2.5i Convenience Package	2.5L SOHC	CVT	\$26,395
2.5i Convenience Package with PZEV Option	2.5L SOHC	CVT	\$27,095
2.5i Sport Package	2.5L SOHC	6MT	\$27,995
		CVT	\$29,195
2.5i Limited Package	2.5L SOHC	CVT	\$31,995
2.5i Limited Package with Multimedia Option	2.5L SOHC	CVT	\$34,295
3.6R	3.6L DOHC	5EAT	\$31,895
3.6R Limited Package	3.6L DOHC	5EAT	\$34,695
3.6R Limited Package with Multimedia Option	3.6L DOHC	5EAT	\$36,995
2.5GT	2.5L DOHC TURBO	6MT	\$38,595

ALL PRICES ALONG WITH SPECIFICATIONS ARE SUBJECT TO CHANGE WITHOUT NOTICE. THE DEALER MAY SELL BELOW SUGGESTED RETAIL WITHOUT FEAR OF RECRIMINATION FROM SUBARU CANADA, INC. MSRP SHOWN EXCLUDES EXCISE TAX FOR AIR CONDITIONING, INLAND FREIGHT AND PRE-DELIVERY CHARGES. MSRP DOES NOT INCLUDE APPLICABLE TAXES.

COLOUR AVAILABILITY

EXTERIOR COLOUR	COLOUR CODE	2.5i						2.5GT	3.6R		
		Convenience Package			Sport Package	Limited Package			Limited Package		
			PZEV Option				Multimedia Option				Multimedia Option
Azurite Blue Pearl	6F	▲	▲	▲	▲	▲	▲	▲	▲	▲	▲
Caramel Bronze Pearl	1H	□	□	□	□	□	▲	□	□	□	
Crystal Black Silica	4S	▲	▲	▲	▲	▲/□	▲	▲	▲/□	▲/□	
Graphite Grey Metallic	3T	▲	▲	▲	▲	▲	▲	▲	▲	▲	
Ruby Red Pearl	1T	▲	▲	▲	▲	▲	▲	▲	▲	▲	
Satin White Pearl	7J	▲	▲	▲	▲	▲	▲	▲	▲	▲	
Sky Blue Metallic	7F	▲	▲	▲	▲	▲	-	▲	▲	▲	
Steel Silver Metallic	6Z	▲	▲	▲	▲	▲	▲	▲	▲	▲	
INTERIOR TRIM		Cloth	Cloth	Cloth	Cloth	Leather	Leather	Leather	Cloth	Leather	Leather

▲ : Black □ : Ivory

Product details based on the latest information available at the time of publication and are subject to change without notice or incurring obligation. © 2010 Subaru Canada, Inc.