



MODEL OVERVIEW

2011 OUTBACK

MODEL	SELECT NEW OR REVISED FEATURES (see specifications for complete list)
All models	<ul style="list-style-type: none"> Folding side-view mirrors New colours: Caramel Bronze Pearl, Ruby Red Pearl Deleted colour: Harvest Gold Metallic
Outback 2.5i Convenience (new model) <div>  </div>	<ul style="list-style-type: none"> Same equipment as 2010 PZEV model, without PZEV emissions equipment (PZEV emissions equipment is an option on the 2.5i Convenience – Lineartronic® CVT only) Voice-activated blueconnect® Bluetooth® hands-free system <p>↓</p> <p>Sport Package</p> <ul style="list-style-type: none"> Front bumper underguard (silver) <p>↓</p> <p>Limited Package</p> <ul style="list-style-type: none"> No changes
Outback 3.6R <div>  </div>	<ul style="list-style-type: none"> No changes

Product details based on the latest information available at the time of publication and are subject to change without notice or incurring obligation. © 2010 Subaru Canada, Inc.

MODEL OVERVIEW

2011 OUTBACK



2.5i Sport Package shown

- 1** Folding side-view mirrors are ideal for those who park in tight spots or on the street.
- 2** Innovative raised-profile roof rails with integrated swing-in-place crossbars afford an SUV-like profile. They are rated to hold 150 lbs.
- 3** Despite being 20 mm shorter than the previous generation, the 2011 Outback has a 70 mm longer wheelbase for an even more complaint ride.
- 4** Dark lower cladding emphasizes Outback's impressive ground clearance, which is more than many conventional SUVs.
- 5** Aggressive wheel arches give the Outback an SUV-like stance, and draw the eye to the standard 17-inch aluminum wheels.
- 6** Standard front fog lights add to the Outback's go-anywhere appeal and provide crisp illumination in adverse conditions.
- 7** A front bumper underguard, new for 2011 on the 2.5i Sport Package, reinforces the rugged exterior styling.
- 8** The Outback's grille closely resembles Tribeca's, reaffirming Outback's position as the SUV alternative.

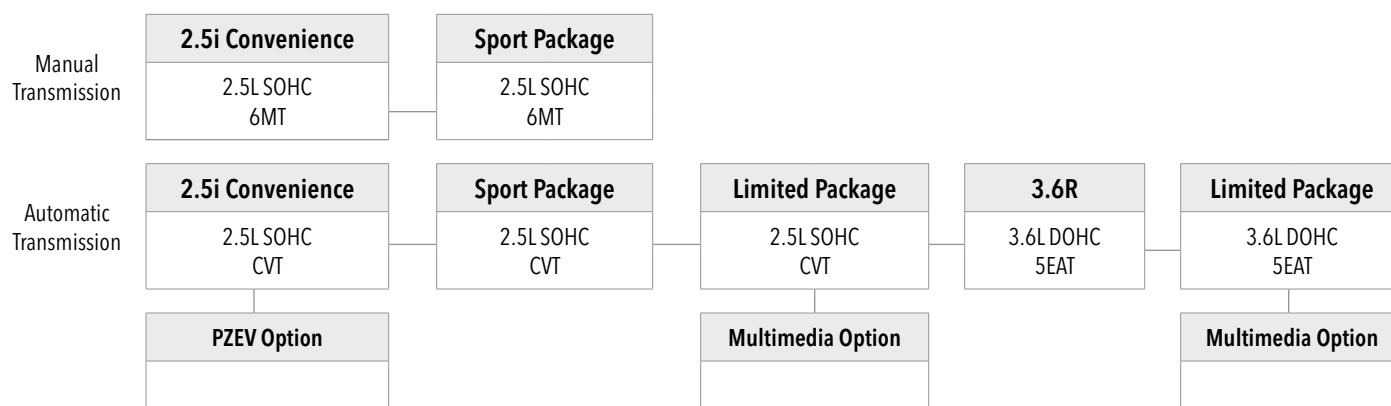


- 1** The 2011 Outback offers right-sized versatility with more cargo volume than Venza and the Accord Crosstour.
- 2** The blueconnect® Bluetooth® hands-free system is now standard on all models so drivers can keep their hands on the wheels and their eyes on the road.
- 3** Every Outback is equipped with a 10-way power driver's seat, including power lumbar support. A comfortable driver is an alert driver.
- 4** The design of the front seat has been optimized to reduce whiplash in a rear collision, negating the need for anti-whiplash head restraints, allowing for a more comfortable design.
- 5** A MediaHub for iPod® and USB integration is standard on most models. Now an iPod® or USB can be controlled directly through the audio system.
- 6** Following in the Tribeca's footsteps, the Outback's interior won its category in the Ward's 2010 Interior of the Year Awards.

Product details based on the latest information available at the time of publication and are subject to change without notice or incurring obligation. © 2010 Subaru Canada, Inc.

MODEL LINEUP

2011 OUTBACK



Outback 2.5i Convenience

Horizontally opposed, 4-cylinder, 2.5L SUBARU BOXER engine with i-Active Valve Lift System
 170 horsepower and 170 lb-ft of torque
 6-speed Manual Transmission (6MT) or optional Lineartronic® CVT (Continuously Variable Transmission) with paddle shift controls
 Subaru symmetrical full-time All-Wheel Drive
 Vehicle Dynamics Control system and Traction Control System
 Anti-lock Braking System with Electronic Brake-force Distribution (EBD) and Brake Assist
 Front brakes: Ventilated discs (294 x 24 mm), dual-piston calipers
 Rear brakes: Solid discs (286 x 10 mm), single-piston calipers
 Electronic parking brake and driver-selectable Hill Holder system
 Driver and front passenger front and side-impact airbags; side curtain airbags with rollover sensor
 Whiplash-reducing front seats with height-adjustable head restraints
 17-inch aluminum alloy wheels with Continental ContiProContact™ All-Season tires
 Splash guards

Power-adjustable, foldable, heated body-colour door mirrors
 Fully automatic headlights
 Multi-reflector halogen fog lights
 Raised-profile roof rails with integrated swing-in-place crossbars
 Privacy tinted glass on rear doors and cargo area
 AM/FM/CD/MP3/WMA audio system with 4 speakers, auxiliary audio input and steering wheel-integrated controls
 Voice-activated blueconnect® Bluetooth® hands-free system
 Tilt-adjustable, telescopic steering wheel with integrated cruise control
 Low oil and low windshield washer fluid warning indicators
 Power windows (driver's auto down)
 Heated front seats; 10-way power-adjustable driver's seat including lumbar support
 60/40-split, flat-folding and reclining rear seats
 Premium cloth upholstery
 Retractable cargo cover
 Outback embroidered floor mats

Sport Package:

Available on Outback 2.5i Convenience (Lineartronic® CVT)

Front bumper underguard
 Windshield wiper de-icer
 Power tilting and sliding glass sunroof
 SIRIUS® Satellite Radio installed (free 3-month trial subscription included)
 MediaHub for iPod®/USB audio integration
 Auto-dimming rearview mirror with compass
 Leather-wrapped steering wheel and gear selector (6MT)
 Power windows (driver's auto up/down)
 Cargo area tray

PZEV OPTION:

Available on Outback 2.5i Convenience (Lineartronic® CVT only)

PZEV emissions equipment
 PZEV rear badge
 PZEV embroidered floor mats



Limited Package:

Available on Outback 2.5i Convenience (Lineartronic® CVT) and 3.6R (5EAT)

Power tilting and sliding glass sunroof
Windshield wiper de-icer
SIRIUS® Satellite Radio installed (free 3-month trial subscription included)
MediaHub for iPod®/USB audio integration
Auto-dimming rearview mirror with compass
Power windows (driver's auto up/down)
Leather-wrapped steering wheel
Premium AM/FM/6CD/MP3/WMA audio system
440-watt Harman Kardon® amplifier
9-speaker Harman Kardon® system including subwoofer
Automatic dual-zone climate control
4-way power-adjustable front passenger seat
Woodgrain interior trim
Brushed aluminum front door sills
Cargo area tray
Perforated leather seating surfaces
Available Multimedia Option

MULTIMEDIA OPTION

Available on Outback 2.5i Limited Package and 3.6R Limited Package

AM/FM/CD/MP3/WMA audio system, voice-activated Bluetooth® hands-free system, Bluetooth® streaming audio, rear-view camera, DVD playback, voice-activated GPS DVD-based navigation and monitor system featuring a colour touchscreen with calendar and calculator.

Outback 3.6R

Horizontally opposed, 6-cylinder, 3.6L SUBARU BOXER engine with Dual Active Valve Control System
256 horsepower and 247 lb-ft of torque
5-speed Electronic Direct Control Automatic Transmission with Manual Mode (5EAT), blipping control and paddle shift controls
Subaru symmetrical full-time All-Wheel Drive
Vehicle Dynamics Control system and Traction Control System
Anti-lock Braking System with Electronic Brake-force Distribution (EBD) and Brake Assist
Front brakes: Ventilated discs (316 x 30 mm), dual-piston calipers
Rear brakes: Ventilated discs (290 x 18 mm), single-piston calipers
Electronic parking brake and driver-selectable Hill Holder system
Driver and front passenger front and side-impact airbags; side curtain airbags with rollover sensor
Whiplash-reducing front seats with height-adjustable head restraints
17-inch aluminum alloy wheels with Continental ContiProContact™ All-Season tires
Splash guards
Power-adjustable, foldable, heated body-colour door mirrors
Multi-reflector halogen fog lights
Raised-profile roof rails with integrated swing-in-place crossbars
Privacy tinted glass on rear doors and cargo area
Twin muffler exhaust

Windshield wiper de-icer
Fully automatic headlights
Power tilting and sliding glass sunroof
AM/FM/CD/MP3/WMA audio system with 4 speakers, auxiliary audio input and steering wheel-integrated controls
SIRIUS® Satellite Radio installed (free 3-month trial subscription included)
MediaHub for iPod®/USB audio integration
Voice-activated blueconnect® Bluetooth® hands-free system
Auto-dimming rearview mirror with compass
Tilt-adjustable, telescopic steering wheel with integrated cruise control
Leather-wrapped steering wheel
Low oil and low windshield washer fluid warning indicators
Power windows (driver's auto up/down)
Heated front seats; 10-way power-adjustable driver's seat including lumbar support
60/40-split, flat-folding and reclining rear seats
Cargo area tray and retractable cargo cover
Premium cloth upholstery

Product details based on the latest information available at the time of publication and are subject to change without notice or incurring obligation. © 2010 Subaru Canada, Inc.

VEHICLE SPECIFICATIONS

2011 OUTBACK

2.5i Convenience

3.6R

Measurements

FUEL ECONOMY

Manual transmission (City/Hwy) (L/100 km)	10.6/7.4	-
Manual transmission (City/Hwy) (Imperial MPG)	27/38	-
Automatic transmission (City/Hwy) (L/100 km)	9.5/6.9	11.8/8.2
Automatic transmission (City/Hwy) (Imperial MPG)	30/41	24/34
Recommended minimum octane (AKI)	87	87
Fuel tank capacity (L)	70	70

GENERAL WEIGHTS

Curb weight: Manual transmission (kg)	1542	-
Curb weight: Automatic transmission (kg)	1591	1648
Gross Vehicle Weight Rating (GVWR) (kg)	2080	2130

TOWING CAPACITY ([†]Please review Owner's Manual for details)

Maximum weight (kg) with trailer brakes [†]	1227	1363
Maximum tongue weight (kg)	91	91

EXTERIOR

Length (mm)	4780	4780
Width (mm) without mirrors	1820	1820
Width (mm) with mirrors	2050	2050
Height (mm) with roof rails	1670	1670
Roof rack: Max load (kg)	68	68
Wheelbase (mm)	2740	2740
Track: Front (mm)	1550	1550
Track: Rear (mm)	1550	1550
Minimum ground clearance (at curb weight) (mm)	220	220
Steering: Turns (lock-to-lock)	3.2	3.2
Steering: Turning circle (curb-to-curb) (m)	11.2	11.2
Drag coefficient (cd)	0.35	0.35

INTERIOR

Headroom: Front (mm)	1036	982
Headroom: Rear (mm)	999	999
Legroom: Front (mm)	1091	1091
Legroom: Rear (mm) (minimum)	960	960
Shoulder room: Front (mm)	1430	1430
Shoulder room: Rear (mm)	1426	1426
Hip room: Front (mm)	1384	1384
Hip room: Rear (mm)	1370	1370
EPA passenger volume (L)	2984	2899

Product details based on the latest information available at the time of publication and are subject to change without notice or incurring obligation. © 2010 Subaru Canada, Inc.

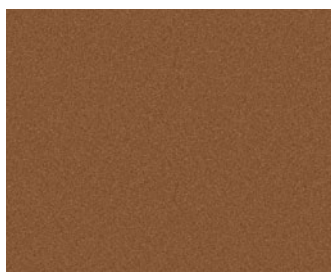
VEHICLE SPECIFICATIONS

2011 OUTBACK

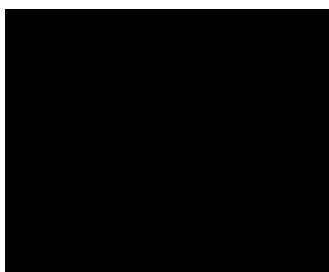
	2.5i Convenience	3.6R
CARGO AREA		
Cargo volume (seats up) (L)	972	972
Cargo volume (seats folded flat) (L)	2019	2019
Floor length (seats folded flat) (mm)	1790	1790
Floor length (seats up) (mm)	1045	1045
Height (mm)	739	739
Rear gate opening width at floor (mm)	1083	1083
Tailgate to ground height (mm)	756	756
Width between wheel wells (mm)	1090	1090
GEAR RATIOS		
Manual Transmission (6MT):		
First Gear	3.454	-
Second Gear	1.947	-
Third Gear	1.296	-
Fourth Gear	0.972	-
Fifth Gear	0.825	-
Sixth Gear	0.695	-
Reverse Gear	3.636	-
Final Drive Ratio	4.444	-
Lineartronic® CVT (Continuously Variable Transmission) - simulated manual mode:		
First Gear	3.525	-
Second Gear	2.238	-
Third Gear	1.641	-
Fourth Gear	1.194	-
Fifth Gear	0.850	-
Sixth Gear	0.611	-
Reverse Gear	2.358	-
Final Drive Ratio	3.900	-
Automatic Transmission with Manual Mode (5EAT):		
First Gear	-	3.540
Second Gear	-	2.264
Third Gear	-	1.471
Fourth Gear	-	1.000
Fifth Gear	-	0.834
Reverse Gear	-	2.370
Final Drive Ratio	-	3.083

Product details based on the latest information available at the time of publication and are subject to change without notice or incurring obligation. © 2010 Subaru Canada, Inc.

EXTERIOR COLOURS



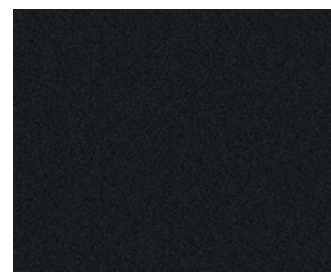
Caramel Bronze Pearl



Crystal Black Silica



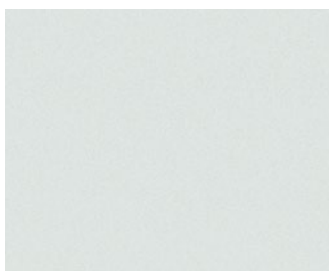
Cypress Green Pearl



Graphite Grey Metallic



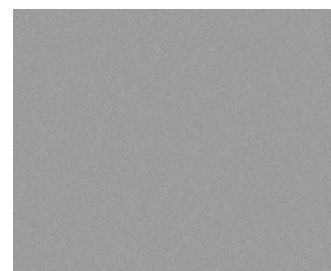
Ruby Red Pearl



Satin White Pearl

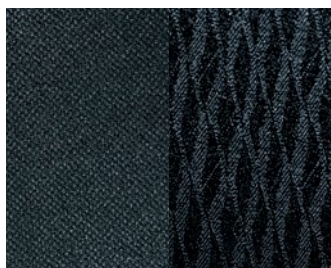


Sky Blue Metallic

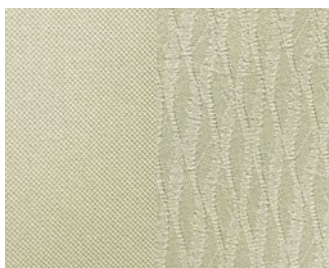


Steel Silver Metallic

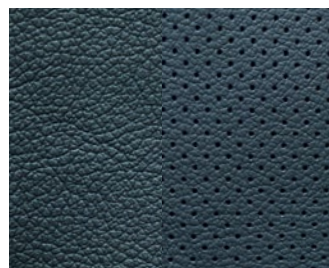
UPHOLSTERY



Black Cloth



Ivory Cloth



Black Leather



Ivory Leather

WHEELS



17-inch Aluminum Alloy,
6-spoke design

Product details based on the latest information available at the time of publication and are subject to change without notice or incurring obligation. © 2010 Subaru Canada, Inc.

VEHICLE ORDERING GUIDE

2011 OUTBACK

VEHICLE PRICING

MODEL	ENGINE	TRANSMISSION	MSRP
2.5i Convenience	2.5L SOHC	6MT	\$28,995
	2.5L SOHC	CVT	\$30,195
2.5i Convenience with PZEV Option	2.5L SOHC	CVT	\$30,895
2.5i Sport Package	2.5L SOHC	6MT	\$31,795
	2.5L SOHC	CVT	\$32,995
2.5i Limited Package	2.5L SOHC	CVT	\$35,795
2.5i Limited Package with Multimedia Option	2.5L SOHC	CVT	\$38,095
3.6R	3.6L DOHC	5EAT	\$35,695
3.6R Limited Package	3.6L DOHC	5EAT	\$38,495
3.6R Limited Package with Multimedia Option	3.6L DOHC	5EAT	\$40,795

ALL PRICES ALONG WITH SPECIFICATIONS ARE SUBJECT TO CHANGE WITHOUT NOTICE. THE DEALER MAY SELL BELOW SUGGESTED RETAIL WITHOUT FEAR OF RECRIMINATION FROM SUBARU CANADA, INC. MSRP SHOWN EXCLUDES EXCISE TAX FOR AIR CONDITIONING, INLAND FREIGHT AND PRE-DELIVERY CHARGES. MSRP DOES NOT INCLUDE APPLICABLE TAXES.

COLOUR AVAILABILITY

EXTERIOR COLOUR	COLOUR CODE	2.5i Convenience					3.6R		
			PZEV Option	Sport Package	Limited Package			Limited Package	
						Multimedia Option			Multimedia Option
Caramel Bronze Pearl	1H	□	□	□	□	□	□	□	□
Crystal Black Silica	4S	▲	▲	▲	▲ / □	▲ / □	▲	▲ / □	▲ / □
Cypress Green Pearl	4T	□	□	□	□	□	□	□	□
Graphite Grey Metallic	3T	▲	▲	▲	▲	▲	▲	▲	▲
Ruby Red Pearl	1T	▲	▲	▲	▲	▲	▲	▲	▲
Satin White Pearl	7J	▲	▲	▲	▲	▲	▲	▲	▲
Sky Blue Metallic	7F	▲	▲	▲	▲	▲	▲	▲	▲
Steel Silver Metallic	6Z	▲	▲	▲	▲	▲	▲	▲	▲
INTERIOR TRIM		Cloth	Cloth	Cloth	Leather	Leather	Cloth	Leather	Leather

▲ : Black □ : Ivory

Product details based on the latest information available at the time of publication and are subject to change without notice or incurring obligation. © 2010 Subaru Canada, Inc.